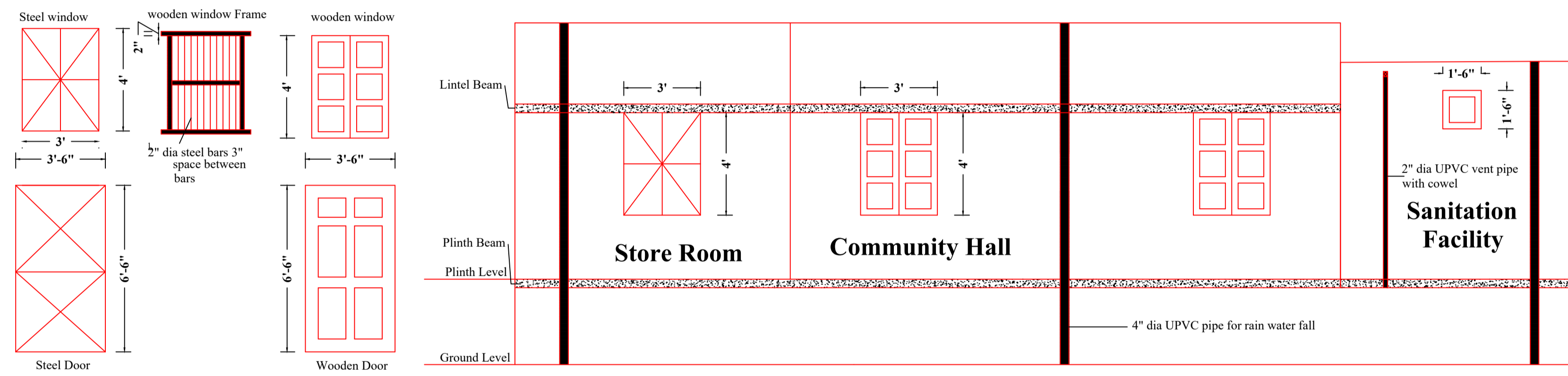
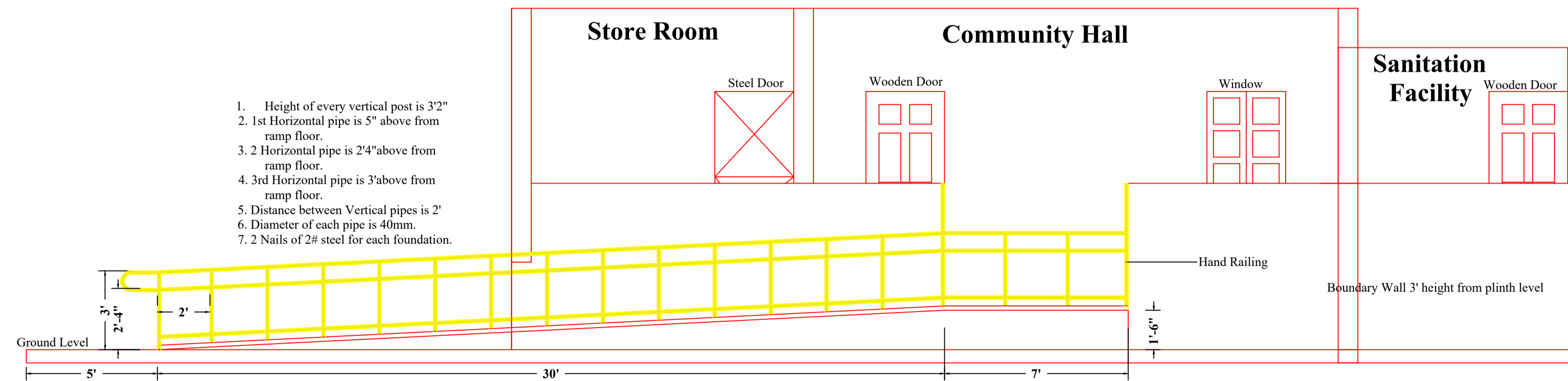


**Detailed Roof Plan of Store Room,
Community Hall & Sanitation Facility**



**BACK VIEW OF STORE ROOM, COMMUNITY HALL &
SANITATION FACILITY**



**FRONT VIEW OF STORE ROOM, COMMUNITY HALL, SANITATION
FACILITY, BOUNDARY WALL & HAND RAILING**

1. Height of every vertical post is 3'2"
2. 1st Horizontal pipe is 5" above from ramp floor.
3. 2 Horizontal pipe is 2'4" above from ramp floor.
4. 3rd Horizontal pipe is 3' above from ramp floor.
5. Distance between Vertical pipes is 2'
6. Diameter of each pipe is 40mm.
7. 2 Nails of 2# steel for each foundation.

Project : Increasing Community Resilience to Natural Disaster by Reducing Vulnerability to Risk in District Sujawal

NOTE
1. DO NOT MEASURE THE DRAWING IF DOUBT ASK.
2. PLEASE CONFIRM DIRECTION OF QIBLA BEFORE TOILET LAYOUT.

DESIGN & ENGINEERED BY:
SAJID HUSSAIN
B.TECH (HONOURS) CIVIL
FIELD ENGINEER

TITLE:
FRONT & BACK ELEVATION,
DETAILED ROOF PLAN

DRG.NO
04